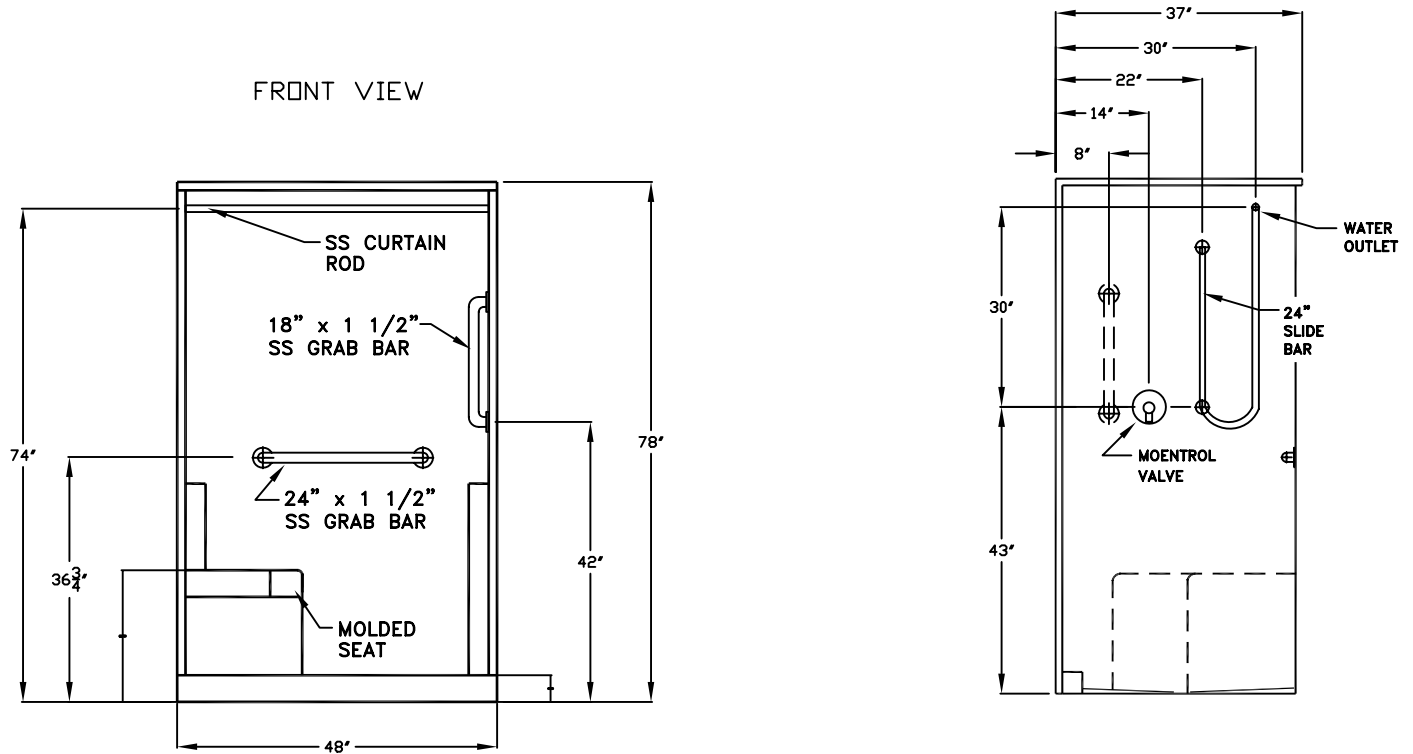


Comfort Series

FOR DIMENSIONAL PURPOSES ONLY SIDE VIEW



Accessible Shower Stall

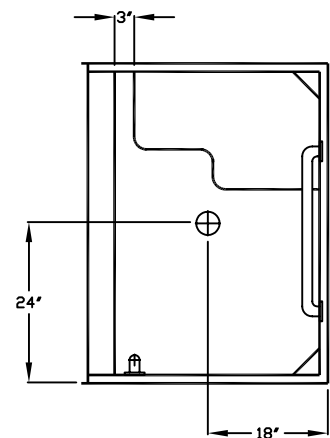
The shower enclosure shall be Comfort Designs Model XSS48374.00SH right or left. Finished surface shall be of sanitary-grade polyester Gelcoat exhibiting a minimal thickness of 15 dry mils, and a finished cured Barcol hardness of 80-90 as tested with ASTM D-2583. Unit construction shall be of molded reinforced fiberglass with a 15% minimum fiberglass content. The unit shall have outside dimensions of 48" x 37" x 78" with 4" threshold. The base shall be attached to the sump of the unit in such a manner to form an integral part with an inner and outer coating of reinforced polyester resin. The unit shall meet ANSI 124.2, FHA, HUD, BOCA, NAHB, UPC, and shall meet the requirements of Southern Building Code.

The enclosure shall be equipped with the following factory installed accessories:
 1) One 24" x 1 1/2" & one 18" x 1 1/2" grab bar 2) molded seat, 3) Moentrol valve, 4) 24" slide bar/hand shower kit, 5) SS curtain rod, 6) No caulk shower drain shipped loose.

Available options: 1) Green shower curtain, anti-bacterial, and hooks, 2) White shower curtain and hooks.

NOTE: DO NOT ROUGH IN ON VALVE SIDE UNTIL UNIT IS RECEIVED AND IN PLACE

TOP VIEW



DUE TO THE NATURE OF THE MATERIALS DIMENSIONS MAY VARY ± 1/2"

Job Name:	COMFORT DESIGNS	
Model No.:	Drawing#:XS4837F	
Approved by:	Date Approved:	Date: 2-17-00 Revised: 8-16-01
Rep.:	Wholesaler:	Quote No.: